

LOT 1042 PLAN 72191 C.L.S.R., 89-103 L.T.O.

LOT 1041

LAKEVIEW AVENUE

LOT 1013 LIARD FIRST NATION C.L.S.R. LOT 1013

LOT 1012 TOWN OF WATSON LAKE LOT 1012 0.486 ha

LOT 1014-2 0.953 ha SIGNPOST FOREST

QUAD 85Y1539

QUAD 85Y1537

QUAD 85Y1538

QUAD 85Y1536

QUAD 85Y1535

QUAD 85Y1534

QUAD 85Y1533

QUAD 85Y1532

QUAD 85Y1531

QUAD 85Y1530

QUAD 85Y1529

QUAD 85Y1528

QUAD 85Y1527

QUAD 85Y1526

QUAD 85Y1525

QUAD 85Y1524

QUAD 85Y1523

QUAD 85Y1522

QUAD 85Y1521

QUAD 85Y1520

QUAD 85Y1519

QUAD 85Y1518

QUAD 85Y1517

QUAD 85Y1516

QUAD 85Y1515

QUAD 85Y1514

QUAD 85Y1513

QUAD 85Y1512

QUAD 85Y1511

QUAD 85Y1510

QUAD 85Y1509

QUAD 85Y1508

QUAD 85Y1507

QUAD 85Y1506

QUAD 85Y1505

QUAD 85Y1504

QUAD 85Y1503

QUAD 85Y1502

QUAD 85Y1501

QUAD 85Y1500

QUAD 85Y1499

QUAD 85Y1498

QUAD 85Y1497

QUAD 85Y1496

QUAD 85Y1495

QUAD 85Y1494

QUAD 85Y1493

QUAD 85Y1492

QUAD 85Y1491

QUAD 85Y1490

QUAD 85Y1489

QUAD 85Y1488

QUAD 85Y1487

QUAD 85Y1486

QUAD 85Y1485

QUAD 85Y1484

QUAD 85Y1483

QUAD 85Y1482

QUAD 85Y1481

QUAD 85Y1480

QUAD 85Y1479

QUAD 85Y1478

QUAD 85Y1477

QUAD 85Y1476

QUAD 85Y1475

QUAD 85Y1474

QUAD 85Y1473

QUAD 85Y1472

QUAD 85Y1471

QUAD 85Y1470

QUAD 85Y1469

QUAD 85Y1468

QUAD 85Y1467

QUAD 85Y1466

QUAD 85Y1465

QUAD 85Y1464

QUAD 85Y1463

QUAD 85Y1462

QUAD 85Y1461

QUAD 85Y1460

QUAD 85Y1459

QUAD 85Y1458

QUAD 85Y1457

QUAD 85Y1456

QUAD 85Y1455

QUAD 85Y1454

QUAD 85Y1453

QUAD 85Y1452

QUAD 85Y1451

QUAD 85Y1450

QUAD 85Y1449

QUAD 85Y1448

QUAD 85Y1447

QUAD 85Y1446

QUAD 85Y1445

QUAD 85Y1444

QUAD 85Y1443

QUAD 85Y1442

QUAD 85Y1441

QUAD 85Y1440

QUAD 85Y1439

QUAD 85Y1438

QUAD 85Y1437

QUAD 85Y1436

QUAD 85Y1435

QUAD 85Y1434

QUAD 85Y1433

QUAD 85Y1432

QUAD 85Y1431

QUAD 85Y1430

QUAD 85Y1429

QUAD 85Y1428

QUAD 85Y1427

QUAD 85Y1426

QUAD 85Y1425

QUAD 85Y1424

QUAD 85Y1423

QUAD 85Y1422

QUAD 85Y1421

QUAD 85Y1420

QUAD 85Y1419

QUAD 85Y1418

QUAD 85Y1417

QUAD 85Y1416

QUAD 85Y1415

QUAD 85Y1414

QUAD 85Y1413

QUAD 85Y1412

QUAD 85Y1411

QUAD 85Y1410

QUAD 85Y1409

QUAD 85Y1408

QUAD 85Y1407

QUAD 85Y1406

QUAD 85Y1405

QUAD 85Y1404

QUAD 85Y1403

QUAD 85Y1402

QUAD 85Y1401

QUAD 85Y1400

QUAD 85Y1399

QUAD 85Y1398

QUAD 85Y1397

QUAD 85Y1396

QUAD 85Y1395

QUAD 85Y1394

QUAD 85Y1393

QUAD 85Y1392

QUAD 85Y1391

QUAD 85Y1390

QUAD 85Y1389

QUAD 85Y1388

QUAD 85Y1387

QUAD 85Y1386

QUAD 85Y1385

QUAD 85Y1384

QUAD 85Y1383

QUAD 85Y1382

QUAD 85Y1381

QUAD 85Y1380

QUAD 85Y1379

QUAD 85Y1378

QUAD 85Y1377

QUAD 85Y1376

QUAD 85Y1375

QUAD 85Y1374

QUAD 85Y1373

QUAD 85Y1372

QUAD 85Y1371

QUAD 85Y1370

QUAD 85Y1369

QUAD 85Y1368

QUAD 85Y1367

QUAD 85Y1366

QUAD 85Y1365

QUAD 85Y1364

QUAD 85Y1363

QUAD 85Y1362

QUAD 85Y1361

QUAD 85Y1360

QUAD 85Y1359

QUAD 85Y1358

QUAD 85Y1357

QUAD 85Y1356

QUAD 85Y1355

QUAD 85Y1354

QUAD 85Y1353

QUAD 85Y1352

QUAD 85Y1351

QUAD 85Y1350

QUAD 85Y1349

QUAD 85Y1348

QUAD 85Y1347

QUAD 85Y1346

QUAD 85Y1345

QUAD 85Y1344

QUAD 85Y1343

QUAD 85Y1342

QUAD 85Y1341

QUAD 85Y1340

QUAD 85Y1339

QUAD 85Y1338

QUAD 85Y1337

QUAD 85Y1336

QUAD 85Y1335

QUAD 85Y1334

QUAD 85Y1333

QUAD 85Y1332

QUAD 85Y1331

QUAD 85Y1330

QUAD 85Y1329

QUAD 85Y1328

QUAD 85Y1327

QUAD 85Y1326

QUAD 85Y1325

QUAD 85Y1324

QUAD 85Y1323

QUAD 85Y1322

QUAD 85Y1321

QUAD 85Y1320

QUAD 85Y1319

QUAD 85Y1318

QUAD 85Y1317

QUAD 85Y1316

QUAD 85Y1315

QUAD 85Y1314

QUAD 85Y1313

QUAD 85Y1312

QUAD 85Y1311

QUAD 85Y1310

QUAD 85Y1309

QUAD 85Y1308

QUAD 85Y1307

QUAD 85Y1306

QUAD 85Y1305

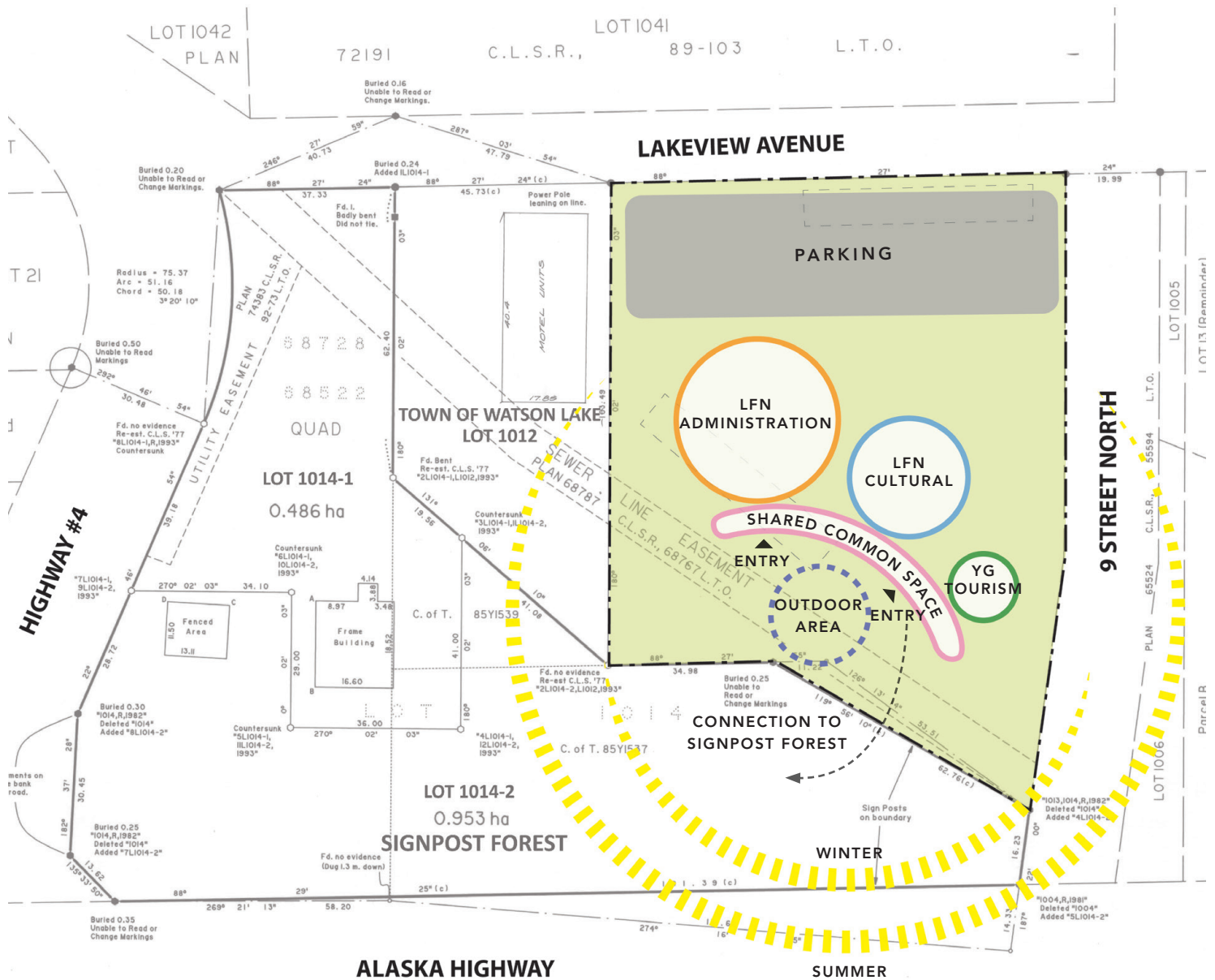
QUAD 85Y1304

QUAD 85Y1303

QUAD



**PROGRAM COMPONENT DIAGRAM**



## CONCEPT SITE PLAN

### LFN COMMUNITY SERVICE BUILDING

LFN Lot 1013, Watson Lake

February 2022

**kobayashi + zedda**  
architecture | planning | urban design

## BUILDING PROGRAMME COMPONENTS

Through consultation with LFN Chief & Council, LFN administration departments, citizens, and Yukon Government Tourism representatives, the proposed building will consist of three key programme components. These are defined as follows:

1. **Liard First Nation Administration Component** – 24,384 Square Feet
  - Chief, Council & Executive
  - Justice Department
  - Human Resources
  - Finance
  - Language
  - Education
  - Health & Social
2. **Liard First Nation Cultural Component** – 16,590 Square Feet
  - Community Gift Shop / Art Gallery
  - Kaska Story Exhibit Hall
  - Great Kaska Community Hall
  - Commercial Kitchen
  - Meeting rooms
  - Retail Storefront
3. **Yukon Government Visitor Centre** – 5,166 Square Feet - Leased Area
  - Tourist Information Desk
  - Exhibit / Information Gallery
  - Theatre / Video Screening Room
  - Library

Total Gross Floor Area: **46,139** Square Feet.

Refer to the attached building component diagrams to illustrate the programme areas, relationships, and how they may be located on Lot 1013.

The programme areas will form the base for the building concept design, scheduled to begin in the coming weeks. In order to help LFN and the design team prepare concept options for consideration, the team has assembled the following visioning questions to help guide building design.

Your input is greatly appreciated!

## VISIONING EXERCISE -

“Close your eyes and imagine you have stepped three years into the future. On that summer day, you walk from the Alaska Highway coming and see the new Liard First Nation Community Services Building for the first time. **How do you feel when you first see the building?**

---

---

---

**What do you like about it most?**

---

---

---

**Is it the choice of materials? What are the materials?**

---

---

---

**Is it the shape? What is the shape?**

---

---

---

**Is it the colours? What are the colours?**

---

---

---

**If you can imagine, step inside, what do you see? Is there glass so you can already see the inside from the outside? When you step in what do you step into? Is it a big open space-maybe a gathering area? Is it a quiet space? Is there someone to greet you or is there a directory that guides you where to go?**

---

---

---

And what is the outdoor space next to the building like, is there outdoor site furniture, places to sit and rest, paths? Does the Is there a ceremonial firepit? What does it look like?

---

---

---

## VISIONING EXERCISE – HELP LIARD FIRST NATION DESIGN THE BUILDING

1. Is the proposed building site a suitable location for the proposed building? **YES** **NO** (circle one)

2. What is the building component that you would access most (Rank in priority from 1-5):

- ☐ LFN Community Gathering Hall & Meeting Rooms
- ☐ LFN Interpretive Centre / Museum – A place to tell and share the LFN story
- ☐ LFN Elders and/or Youth Lounge
- ☐ LFN Chief & Council – Council Chambers
- ☐ LFN Government Departments providing services to citizens
- ☐ LFN Economic & Social Departments
- ☐ LFN Citizen owned cafe / gallery for LFN living culture & art
- ☐ YG operated Visitor Reception Centre

3. What words best fit your idea of the new community building and what it should reflect (circle your top two)?

- a. It should speak to our tradition of living on the land.
- b. It should feel welcoming to community members and visitors
- c. It should tell our story (pre-contact, Alaska Highway, living culture, etc.).
- d. It should utilize natural materials and forms that represent our way of life
- e. It should include art and other representations of LFN living culture.
- f. It should stand out as a specific LFN building and not just another office building
- g. It should \_\_\_\_\_

4. A strong concept is an important anchor for the building design. What concepts should guide the shape of the building (circle your top two)

- a. A circle to imply community and gathering
- b. Shapes found in nature (curves, arches, domes)
- c. The shape of an animal
- d. A square box
- e. A building that curves to create a protected outdoor gathering space
- f. The shape of the building does not matter.

5. If you were the designer, what would the building look like? The building would look like a

\_\_\_\_\_ (fill blanks)

The LFN Hub Building can include a wide variety of community and cultural uses. In this next section, please rank the facilities you would be most excited to see or use from 1 to 5 (or X).

- 1 – Very High Priority
- 2 – High Priority
- 3 – Neutral
- 4 – Low Priority
- 5 – Very Low Priority
- X – Unsure

6. Community and/or Cultural Uses (Rank 1-5):

- ☐ LFN community gathering hall (for large community events & celebrations)
- ☐ LFN Elders, Youth, & Family Gathering Spaces (shared or separate)
- ☐ LFN Interpretive Centre & Tourism Information Centre
- ☐ LFN Citizen-owned retail businesses (café, art gallery, etc.)
- ☐ LFN gallery of living and traditional culture
- ☐ LFN Government Departments
- ☐ LFN Language Education

7. Other Uses (Rank 1 to 5):

- ☐ Meeting Spaces (small & medium) for community use/needs
- ☐ Fitness Centre (weight room and fitness equipment)
- ☐ Gymnasium (medium sized space dedicated to active uses)
- ☐ Full Commercial Kitchen to support the gathering/event space.
- ☐ Health and Wellness support or services
- ☐ Training and Education support or services

8. What words best fit your idea of the new LFN Community building and what it should reflect? (Rank 1 to 5)

- ☐ It should be inclusive and welcoming to citizens, community members, and visitors.
- ☐ It should speak to our traditional life on the land, of a time pre-contact, and how we have evolved and grown through the changes brought about by others.
- ☐ It should tell our story of caring, sharing, respect, and teaching
- ☐ It should utilize natural materials, where possible
- ☐ It should include representations of LFN living culture
- ☐ It should be a place to celebrate our traditions and our people
- ☐ It should create opportunities for all to get involved.
- ☐ It should provide a space for safety, wellness, security and prosperity within our community

## PRECEDENTS

Creating a building and spaces that is reflective of Yukon First Nation culture and values is important. Below are examples of past projects by KZA and other architects which are precedents of architecture with connection to nature, celebration of community, energy efficient design, and use of local materials. In the comments section below, please note if you see aspects of the precedent projects you think would be important to include in the new LFN Hub.



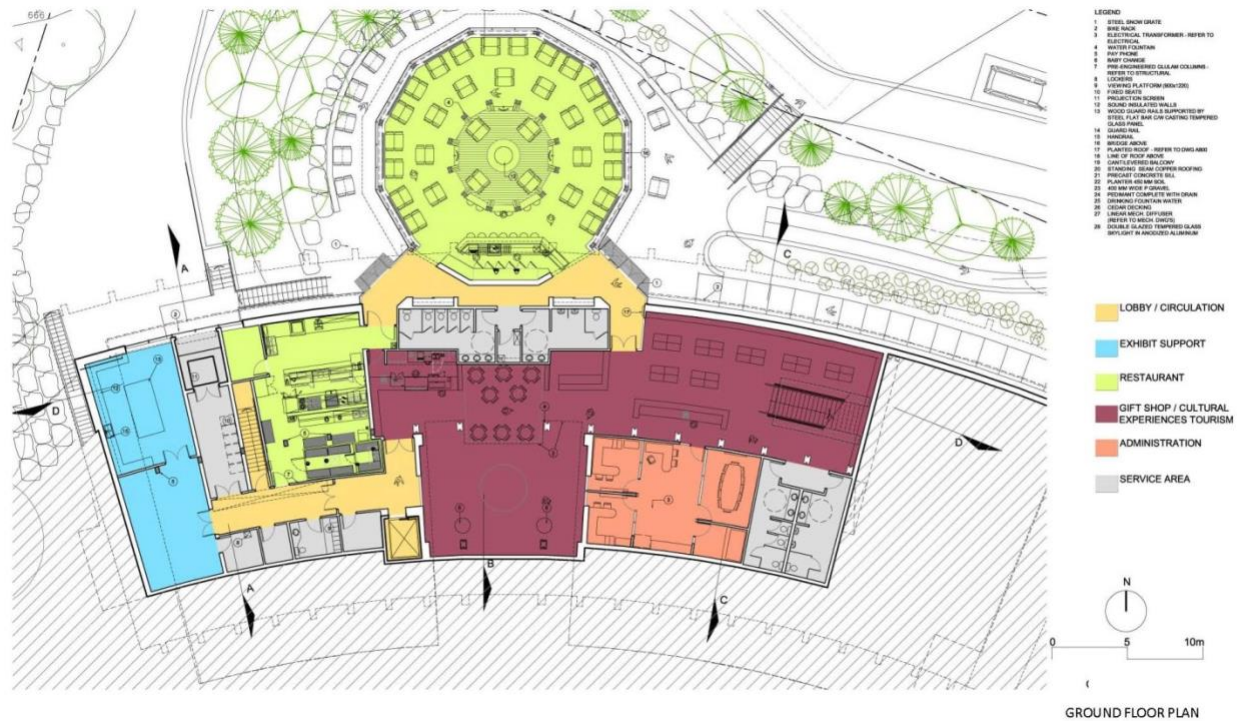
*Aanischaaukamikw Cree Cultural Institute by Rubin & Rotman Architects + Douglas Cardinal*



*Nest Structure – Exterior Wood Skin*



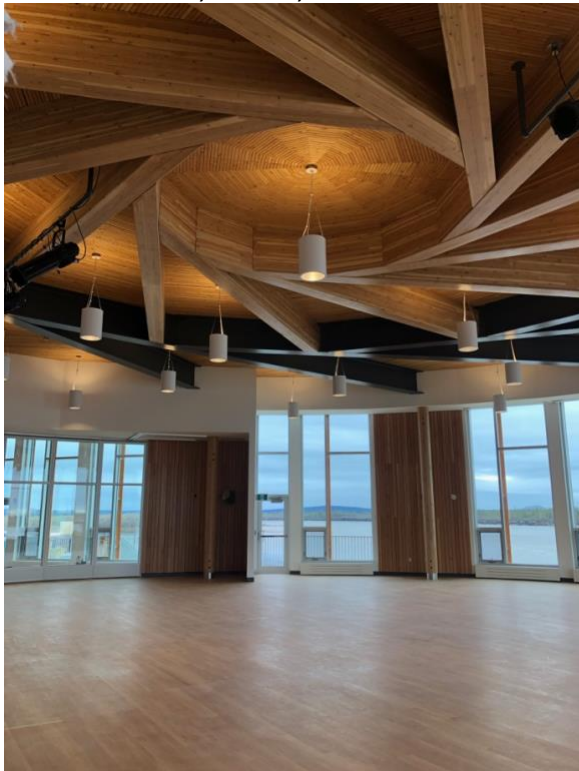
Squamish Lil'Wat Cultural Centre



Squamish Lil'Wat Cultural Centre

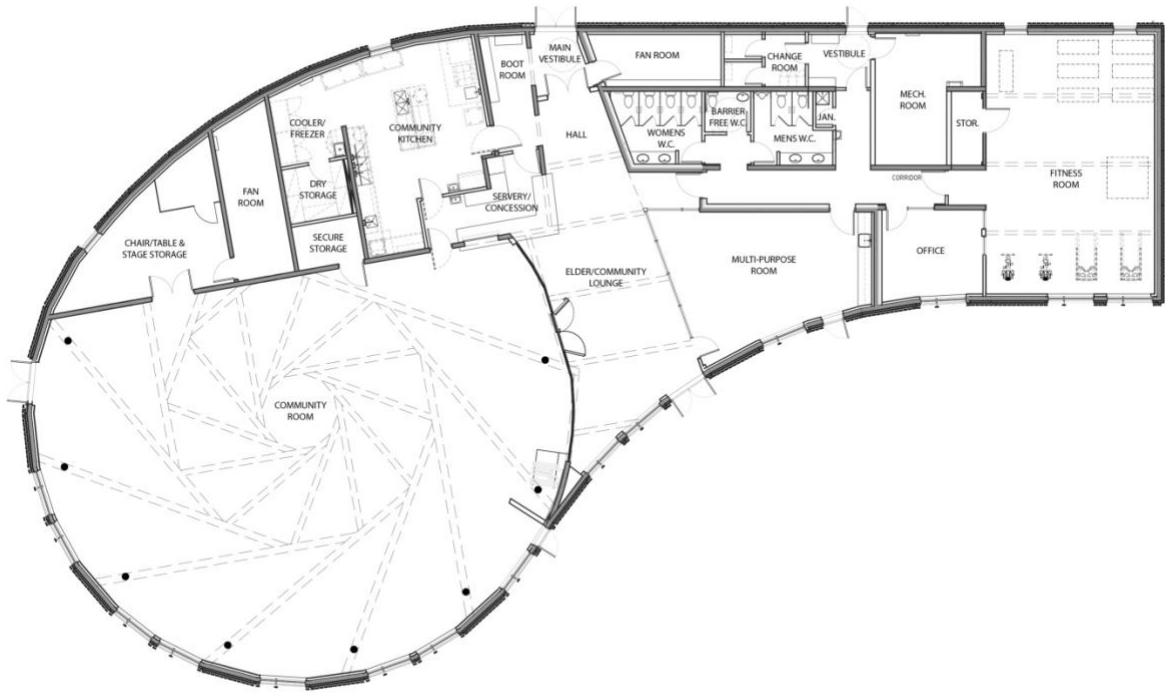


*Old Crow Community Centre by KZA*

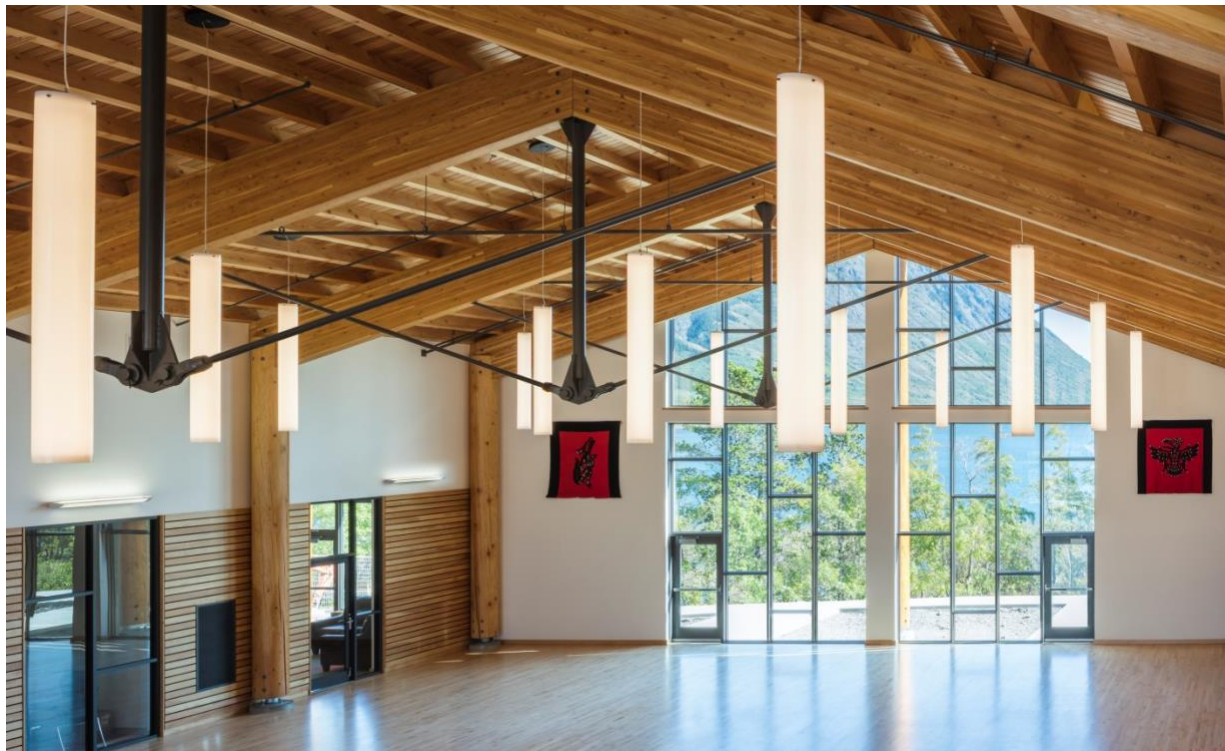


*Old Crow Community Centre by KZA*





*Old Crow Community Centre by KZA*



*Carcross Learning Centre by KZA*



*Carcross Learning Centre by KZA*



*Klahoose First Nation Multi-Centre – Cortez Island, BC*



*Lil'Wat Cultural Center, Squamish, BC*

Any other thoughts? Comments? Please list them below.

This image shows a blank sheet of white paper with horizontal ruling lines. The lines are evenly spaced and run across the width of the page. There are no margins, text, or other markings on the paper.